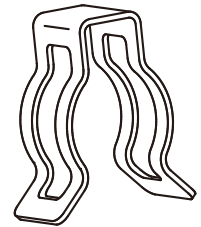


8 | JOINT CLIPS

Types of Joint Clips (Characteristics and Instructions for Use)

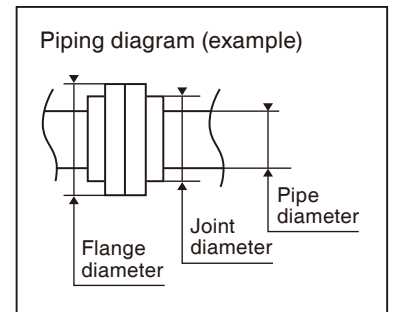
Characteristics

- It is mainly used to join flanged pipes around water.
- It can be easily combined with one touch, which improves workability.
- Since it does not require tools and can be attached and detached by hand, it can be installed even in narrow places where there is no space to handle tools.

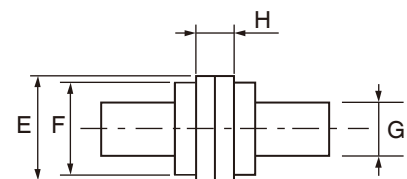
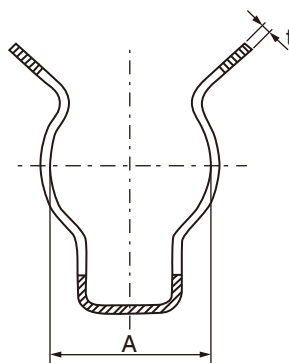
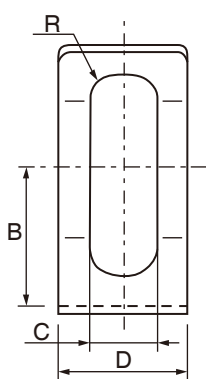


Instructions for Use

- (1) Conditions such as water pressure and operating environment vary from customer to customer, so check the specifications of water hammer, thrust load, etc.
- (2) After installing the Joint Clip, be sure to rotate it left and right to make sure that the flange of the pipe is inserted in the correct position in the window of the quick fastener. Incorrect installation may cause the piping to come off.
- (3) Since the nominal diameter of the product and the joint diameter do not necessarily match, check the dimension table / catalog and use the product that matches the fitting diameter (using a product with a mismatched flange diameter may cause the Joint Clip to fall off or be damaged).
- (4) Repeated use (reuse of the product once inserted into the flange) is not recommended.



Joint Clip [General Type]



Applicable mating parts

Unit: mm

Size No.	A		B	C	D		R	t		Applicable mating parts			
	Basic	Tol.			Basic	Tol.		Basic	Tol.	E	F	G	H
Quick-4	9	±1	11	5.5	11.5	±0.15	R1	0.5	±0.04	13	11	4	5
6	11		13	6	12		R1	0.8		15	13	6	5.5
8 -R3	13		14	6	12		R3	0.8		17	15	8	5.5
10 -R2.5	15		14	6	12		R2.5	0.8		20	17	10	5.5
12.7-R3	20		18	6	14		R3	1	26	22	12.7	5.5	
16A-R3	23		19	6	14		R3	1	30	25	16	5.5	
16B-R3	26		23	6	14		R3	1	34	28	16	5.5	
22.2-R3	29		25	6	14		R3	1	-	32	22.2	5.5	
25.4-R3	35		27	6	16		R3	1	44	38	25.4	5.5	

Material = Stainless steel for spring (SUS304-CSP-3/4H) Hardness = 31HRC or over (310HV or over)

RETAINING RINGS | PUSH NUTS | WAVE WASHERS AND OTHERS | SCREW TYPE PLATE NUTS | SPRING PINS | SNAP PINS

JOINT CLIPS

ASSEMBLY TOOLS